



Programme funded by
EUROPEAN UNION



BSB966

REDACT

Project title: **Rapid Earthquake Damage Assessment Consortium**

Programme Priority: **2.1 Improve joint environmental monitoring**

Common borders. Common solutions.

ABOUT THE PROJECT

Duration

30 months

Start date

1 July 2020

Total value

€ 974 860.00

ENI contribution

€ 896 871.20



REDACT
Rapid Earthquake Damage Assessment Consortium

OVERVIEW

The project aims at establishing a cross-border cooperation to promote **common policies and strategies** leading to sharing data, information and competencies in order to respond to major issues related to **Earthquake Preparedness & Emergency Response**, by providing **reliable Real-Time information** regarding the induced damages.

PARTNERSHIP



Lead Beneficiary

The Legal Successor of Technological Educational Institute of Central Macedonia, the "International Hellenic University" (Greece)

Partner budget
€ 305 000.00



Beneficiary 2

Institute of Engineering Seismology & Earthquake Engineering (Greece)

Partner budget
€ 170 000.00



Beneficiary 3

Democritus University of Thrace - Special Account for Research Funds (Greece)

Partner budget
€ 85 000.00



Beneficiary 4

Gebze Technical University (Turkey)

Partner budget
€ 205 000.00



Beneficiary 5

Ovidius University of Constanta (Romania)

Partner budget
€ 159 860.00



Beneficiary 6

Institute of Geology and Seismology (Republic of Moldova)

Partner budget
€ 50 000.00

Contact person

Konstantinos Papatheodorou

Phone

+30 697 490 7032

E-mail

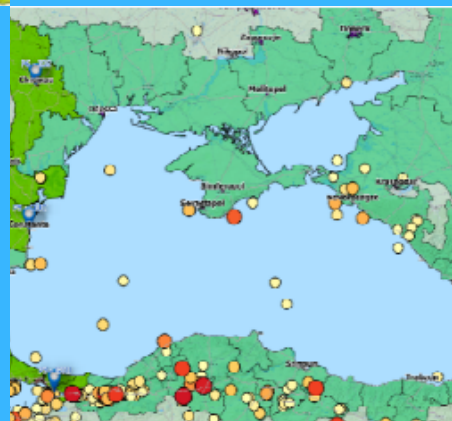
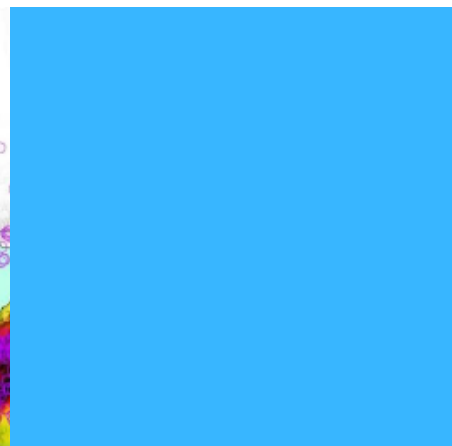
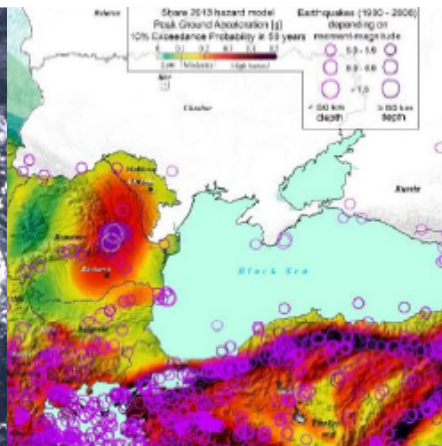
konstantinos.a.papatheodorou@gmail.com

Project website:

www.redact-project.eu

EXPECTED RESULTS

- A **harmonized REDA** (Current status assessment in partners' countries) framework development, based on cross-border exchange of information;
- **Rapid Earthquake Damage Assessment System (REDAS)** to distribute data and information regarding Earthquake Damage: harmonized earthquake hazard maps, building damage estimation maps considering different damage levels, casualty estimation maps considering different severity levels, lifeline damage estimation maps considering different pipeline types;
- REDAcT **Smartphone application** to support crowd sourcing and to provide the ability of communication (exchanging messages) in real time;
- REDAcT **Educational Hub** providing earthquake risk education to raise public awareness and help the population to improve their capacity to respond in Emergencies, to better coordinate with the Authorities and thus to improve Emergency Response Efficiency & public safety.



CONTACT DETAILS

Managing Authority: Ministry of Development, Public Works and Administration

16 Libertatii Blvd, Bucharest 050706, sector 5, Romania

Phone: +40 372 111 323

Fax: +40 372 111 456

E-mail: blacksea-cbc@mdrap.ro

Joint Technical Secretariat: South-East Regional Development Agency

48 Tomis Blvd, Constanta 900742, Romania

Phone: +40 341 452 836

Fax: +40 341 452 841

E-mail: office@bsb.adrse.ro



Joint Operational Programme Black Sea Basin 2014-2020
 Joint Technical Secretariat
 of Joint Operational Programme Black Sea Basin 2014-2020
 September 2021

Joint Operational Programme Black Sea Basin 2014-2020 is co-financed by the European Union through the European Neighbourhood Instrument and the participating countries: Armenia, Bulgaria, Georgia, Greece, Republic of Moldova, Romania, Turkey and Ukraine.

This publication was produced with the financial assistance of the European Union. Its contents are the sole responsibility of Joint Technical Secretariat of Joint Operational Programme Black Sea Basin 2014-2020 and do not necessarily reflect the views of the European Union.

Common borders. Common solutions.

www.blacksea-cbc.net